

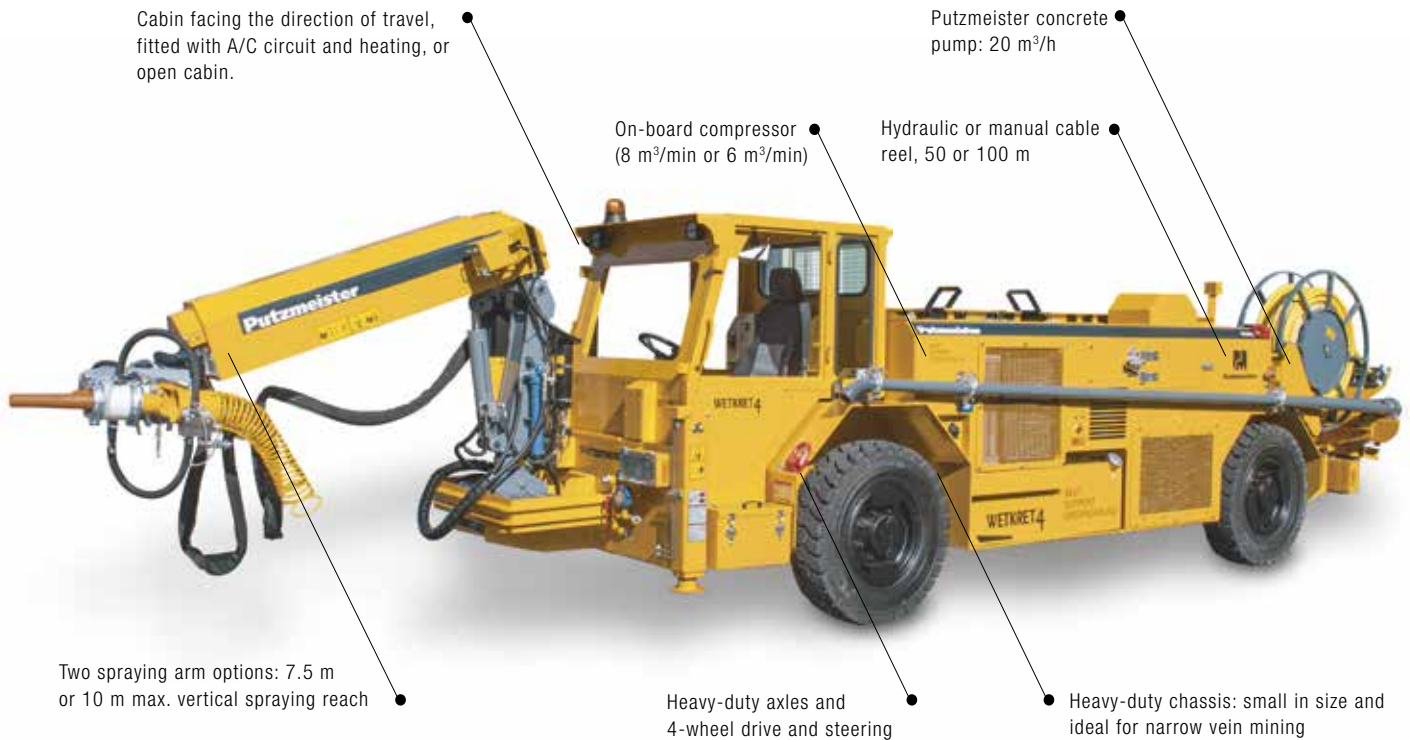


# WETKRET 4

Concrete spraying equipment

Expand your business

# WETKRET4



Wetkret 4 is ideal for narrow galleries in mining, thanks to its heavy-duty chassis with compact size (1,900 mm in width and 2,200 mm in height) and reduced turning radiuses. It boasts two spraying arm versions, adapting to your galleries requirements, one with a maximum vertical reach of 10 m and the other of 7.5 m.

The Putzmeister Wetkret 4 pump guarantees a homogeneous shotcrete application, to be able to ensure the required quality and layer thickness, as well as reducing rebound. Its concrete flow of 20 m<sup>3</sup>/h allows for increased productivity.

Wetkret 4 also comes equipped with automatic synchronization of the additive dosage with the concrete flow, a FOPS/ROPS-certified cabin that faces the direction of travel, ICVD hydrostatic transmission, an integrated air compressor and optimal weight distribution.

## Key advantages

- Suitable for narrow vein mining
- Safe for application and transfer
- Heavy-duty equipment for tough operating conditions
- Optimal operation
- Easy to maintain

# Constant safety

## FOPS/ROPS-certified cabin

The driver's cabin facing the direction of travel has the certification of FOPS Falling Objects Protection Certificate and ROPS rollover protection.

Subject to the customer's request, both sides of the cabin can be protected with screens.

## Safe and ergonomic driving

Driving seat fitted with presence sensor, seatbelt and built-in suspension.



## Visibility when reversing and in adverse conditions

Rear view camera with infrared and monitor in cabin. Up to four more cameras can be included.

LED spotlights (80 W)

## Safety-focused design

Diesel tank and the fuel lines separate from equipment hot spots.

## Stability on any type of terrain

The hydraulically operated parts at the front part of the equipment allow its stability on any terrain, however irregular, guaranteeing a safer operation.

## Emergency brake system

Wetkret 4 has an emergency, software-controlled brake system, automatically activated in dangerous situations.



# Heavy-duty equipment



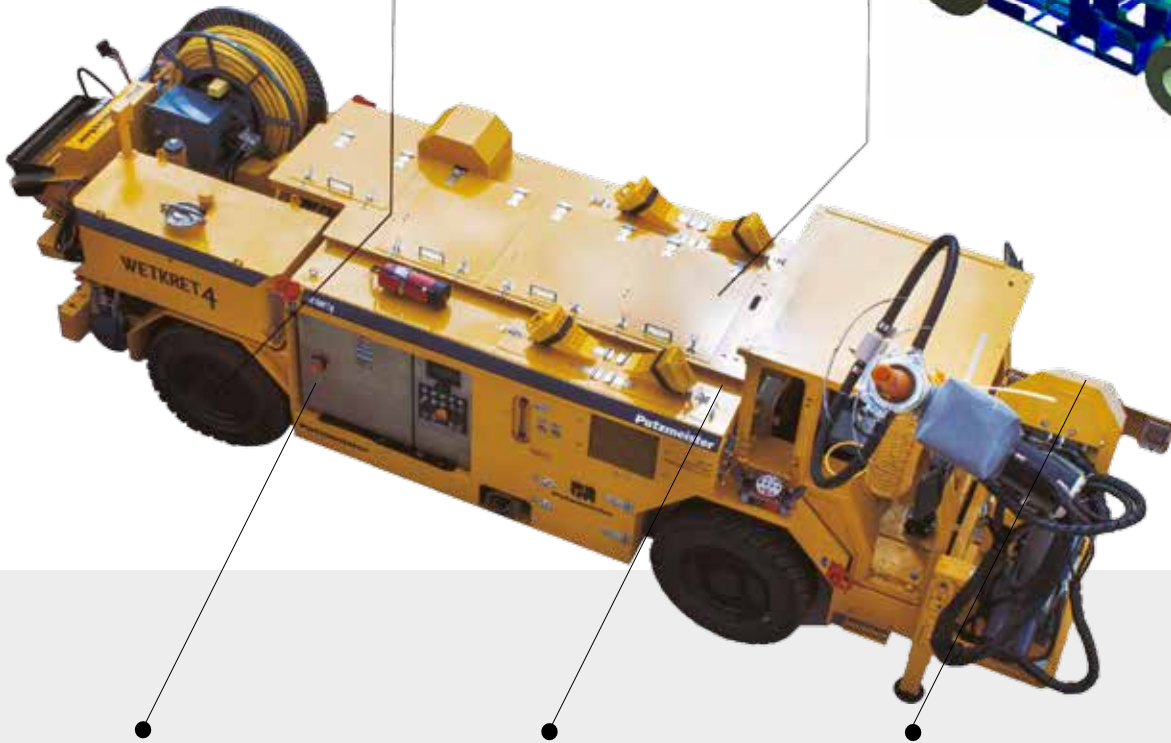
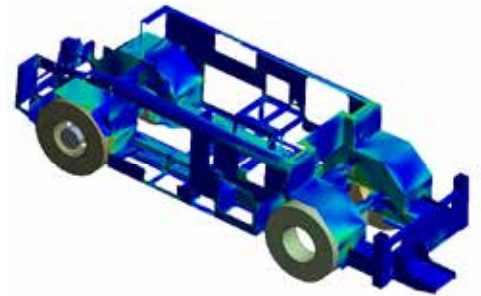
## Optimal transmission

The continuously variable hydrostatic transmission system with automatic gears (ICVD) improves:

- Climbing ability
- Traveling speed
- Start acceleration
- Fuel consumption

## Analysis of distribution of weights, loads and torque

For a suitable balance to improve the operating life of the equipment.



**Heavy-duty axles tested** in the Mixkret range, designed to withstand more than 3,000 kg of additional load.

## Powerful motorization

- Available in Tier 3 or Tier 4f
- With ACERT technology for:
  - Better emissions treatment
  - Better consumption efficiency
  - Greater injection performancez

## Reinforced spraying arm

- **Double rotation cylinder** to reinforce the rotation area for bends and torques
- **Suspension system for transfer**, guaranteeing a long service life for all joints

# Optimal operation



## Display inside cabin

With information on the main operation, safety and maintenance parameters.



## Automatic additive dosing

The amount of additive is adjusted to the pump flow from the same control panel or remote control, avoiding excess dosing and saving unnecessary costs.



## Remote control

Dual radio remote control (Bluetooth) and cable (20 m).

All internal components have been specially treated with resins to protect them from humidity and high temperatures.



## Concrete pump with VHS system and S-tube

Simple and robust pumping system designed by Putzmeister - the concrete pump manufacturer with 60 years of experience. Decreases pulsation for a perfect finish.



# Easy maintenance



## Design for durability

- 80% hydraulic circuit in rigid piping
- Metal covers for protection of all jib features prone to being damaged by rebound

## Better access to components

- Chassis designed to enable access to all components from ground level
- Removable side and top access doors
- Cabin and electrical panel components designed by plug & play configuration
- Single location for Minimes sockets for quick hydraulic checks

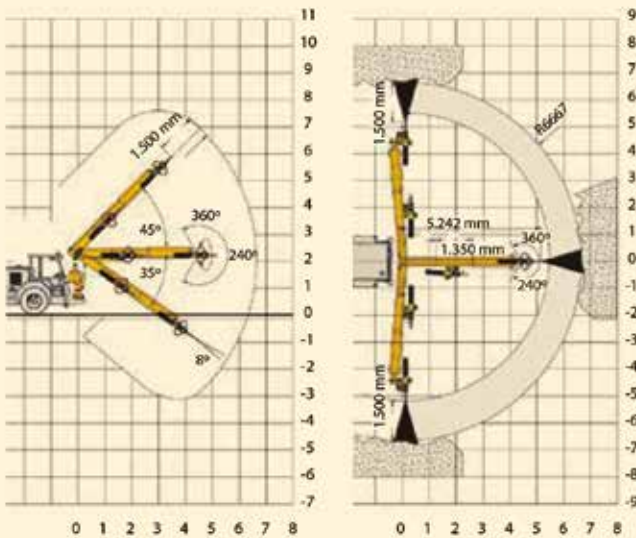




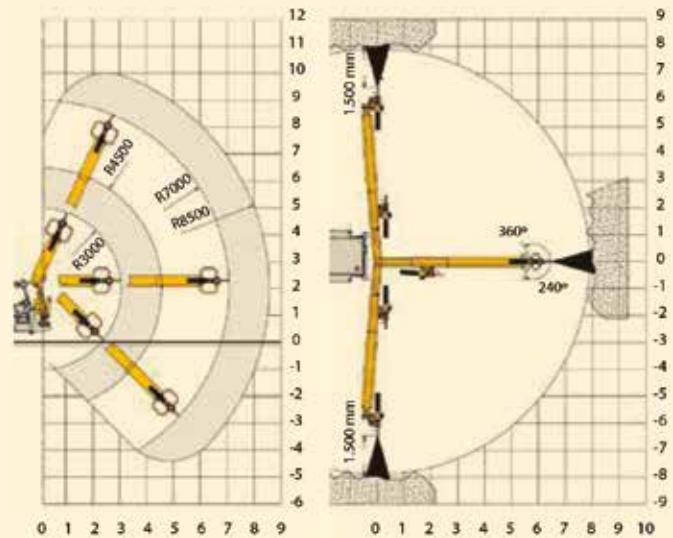
# Data Sheet

## Spraying arm reach diagrams

Putzmeister SA 8.1 LP



Putzmeister SA 10.1



## Putzmeister telescopic spraying arm

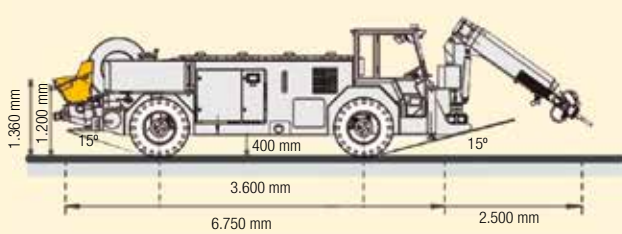
	SA 8.1 LP Version	SA 10.1 Version
Maximum spraying reach vertical / horizontal	7,5 m / 7 m	10 m / 8.5 m
Minimum working section vertical / horizontal	2.5 m / 2.5 m	
Number of arm extensions (proportional hydraulic drive)	3 sections (2 telescopic)	4 sections (3 telescopic)
Telescopic stroke	2.7 m	
Degrees of freedom	6	
Maximum arm angle	+45° / -35°	
2 LED spotlights	24 V / 80 W / 5.700 lm	

## Spraying head

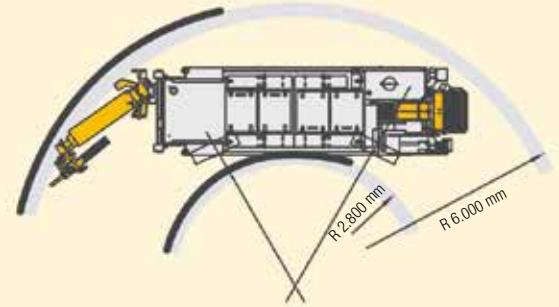
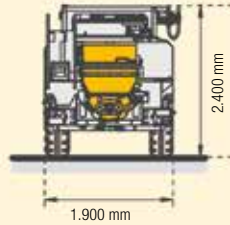
Rotation	360°
Inclination	+120° / -120°
Nutation	8°
Nozzle	DN40

# Data Sheet

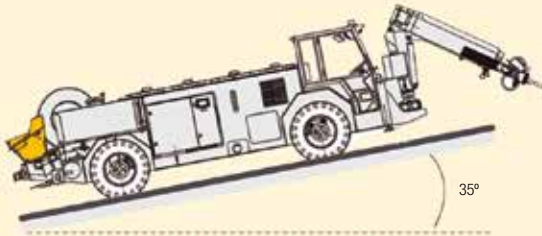
## Dimensions and turning radius



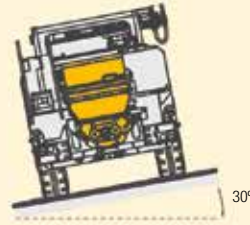
Transport dimensions



turning radius



Maximum longitudinal / transverse gradient while driving



4 wheel steering with crab mode

## Rigid chassis

Speed max.	20 km/h
Transmission	Hydrostatic (ICVD). Swing front axle, fixed rear axle
Traction and steering	Four-wheel drive and four-wheel steering (4WD / 4WS)
Service brakes	On both axles, multi-disc in oil bath.
Parking brake	On both axles, internal SAHR discs (negative)
Wheels for mining	9.00 R20 XZM Michelin
Camara	Rear camara with 5.6" screen in the cabin
Working lights / beacon	4 LED: 24 V / 35 W / 2,100 lm (operational) / Beacon
Weight	13.000 kg

## Diesel engine

	Stage IIIA/Tier 3	Stage IV/Tier 4f
Power	106 kW at 2,200 rpm	100 kW at 2,300 rpm
Torque	558 Nm at 1,400 rpm	460 Nm at 1,600 rpm
Diesel tank	140 l	100 l and 10 l (AdBlue)





## Putzmeister Concrete Pump PM 1507

Type	Double-piston, hydraulic drive
Max. flow (theor.)	20 m <sup>3</sup> /h
Max. Pressure (theor.) on concrete	65 bar
Transport cylinder diameter	150 mm
Max. aggregate size	16 mm
Automatic lubrication system	

### Hopper with electric vibrator

Full hopper capacity	250 l
Filling height	1200 mm
LED spotlight	24 V / 18 W / 700 lm

### Pumping and spraying drive system

Electric IE3	37 kW
--------------	-------

# Data Sheet

## Additive pump synchronized with concrete pumping

Adjustment range	60 - 500 l/h / 1,200 l/h (optional)
Maximum working pressure	7,5 bar
Additive tank (inox)	550 l / 700 l (opcional)
Control system	PLC



## Electric control panel

Stainless steel electrical panel, with anti-humidity and anti-thermal treatment

Power	85 kW
Protection degree	IP65
Power	400 V / 50 Hz - 440 V / 60 Hz

Optional: **EMC filter and transformer.**

Provides additional protection for voltage spikes in the mine.



## High pressure water pump for cleaning

Max. pressure	140 bar
Flow	10,8 l/min

## Cable reel

Manual	50 m
Hydraulic	100 m

## Optional equipment

### Cabin's optionals

Closed driving cabin

Side door with glass cabin

PVC glass cabin

Protective grid

Air-conditioning and heating

Waterproof seat KAB. Driver's seat KAB and GRAMMER

Tramming direction lights

### Electric Compressor

	PM45	PM37SF
Power	45 kW	37 kW
Max. working pressure	7 bar	7,5 bar
Max. air flow	8 m <sup>3</sup> /min	6 m <sup>3</sup> /min

### Others

Strobe beacon

Rubber collar

Automatic / Manual DAFO

Wheels for mining: 9.00 R20 XMine2

LED spotlights: green and red (0.8 W)

2° additive pump (transfer)

Additive tank (700 l)

Additive pump: max. 1,200 l/h

High pressure water pump for cleaning: 30 l/min (200 bar)

Consult Putzmeister for special configurations



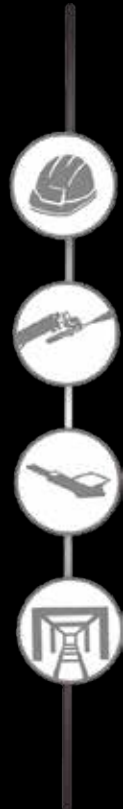
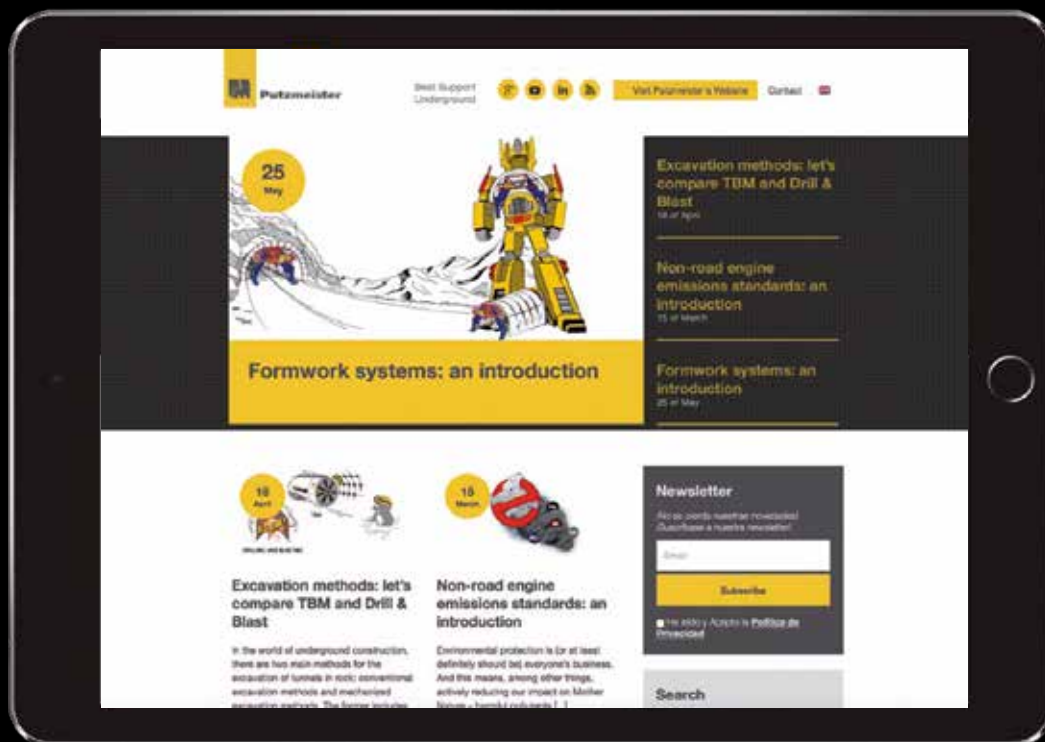


# Putzmeister Underground Technology

## Visit our blog

[Bestsupportunderground.com](http://Bestsupportunderground.com)

Shotcrete in underground mining  
and much more...



This is a merely informative, non-binding document. Maximum theoretical values listed. Specifications are subject to change without prior notice. Photos and drawings are for illustrative purposes only. For available options, please consult the factory.

Subject to technical modifications and errors © by Putzmeister Concrete Pumps GmbH 2018 - All rights reserved. Printed in Spain (1811) - UT 4755-1-EN

Distributed by:

**CELL:** +27 (0) 72 274 9050  
**TEL:** +27 (0) 11 849 8103  
**EMAIL:** [sales@wolfram.co.za](mailto:sales@wolfram.co.za)  
[www.wolfram.co.za](http://www.wolfram.co.za)

**WOLFRAM**  
MINING SUPPLIES CC



**Putzmeister Ibérica S.A.**

Camino de Hormigueras 173 · 28031, Madrid (Spain)

Tel. +34 91 428 8100 · [contacto@putzmeister.com](mailto:contacto@putzmeister.com)

[www.putzmeisterunderground.com](http://www.putzmeisterunderground.com)