

Snatch Blocks



100mm Snatch Block
Stock Code:



**200mm Chain Shackle
Snatch Block With Nose Drop Pin**
Stock Code:



**200mm Eyebolt Shackle
Snatch Block With Drop Nose Pin**
Stock Code:



Cross Rig
Stock Code:

Products designed for
SAFETY & EFFICIENCY

CELL: +27 (0) 72 274 9050
TEL: +27 (0) 11 849 8103
EMAIL: sales@wolfram.co.za

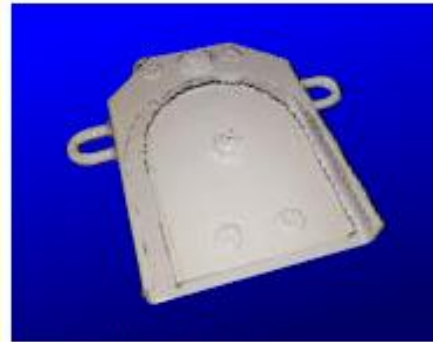
www.wolfram.co.za

WOLFRAM
MINING SUPPLIES CC

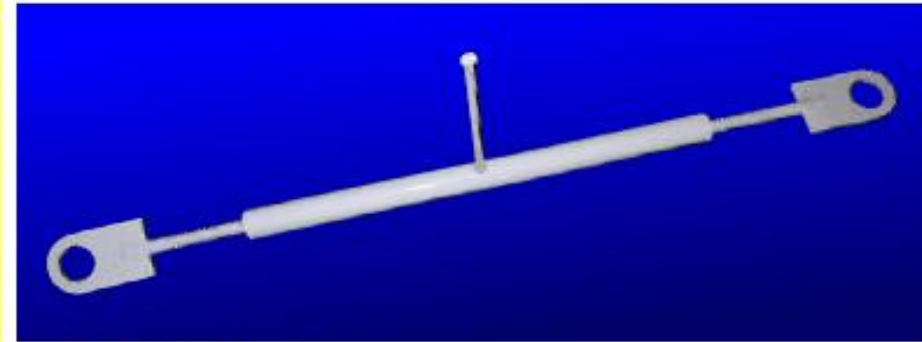
Mono Line Equipment



Return Pulley & Tensioner (rat)
Stock Code:



Return Pulley 150mm
Stock Code:



Rope Tensioner 1.2m
Stock Code:



Ndlovu Swiland Delta Corner Pulley
Stock Code:



Ndlovu Swiland Corner Pulley
Stock Code:



Ndlovu Swiland Delta Corner Pulley
Stock Code:



Guide Pulley Light Weight
Stock Code:

Products designed for
SAFETY & EFFICIENCY

CELL: +27 (0) 72 274 9050
TEL: +27 (0) 11 849 8103
EMAIL: sales@wolfram.co.za
www.wolfram.co.za



WOLFRAM
MINING SUPPLIES CC

Mono Line Equipment



Guide Pulley Mk2
Stock Code:



Guide Pulley Heavy Duty
Stock Code:



Brow Pulley MK2
Stock Code:



Brow Pulley
Stock Code:



Twine Cutter
Stock Code:



Delta Corner Pulley
Stock Code:



Delta Corner Pulley
Stock Code:



Back To Back Corner Pulley
Stock Code:

Products designed for
SAFETY & EFFICIENCY

CELL: +27 (0) 72 274 9050
TEL: +27 (0) 11 849 8103
EMAIL: sales@wolfram.co.za

www.wolfram.co.za

W
WOLFRAM
MINING SUPPLIES CC

Mono Line Equipment



Guide Pulley Mk2
Stock Code:



Guide Pulley Heavy Duty
Stock Code:



Brow Pulley MK2
Stock Code:



Brow Pulley
Stock Code:



Twine Cutter
Stock Code:



Delta Corner Pulley
Stock Code:



Delta Corner Pulley
Stock Code:



Back To Back Corner Pulley
Stock Code:

Products designed for
SAFETY & EFFICIENCY

CELL: +27 (0) 72 274 9050
TEL: +27 (0) 11 849 8103
EMAIL: sales@wolfram.co.za

www.wolfram.co.za

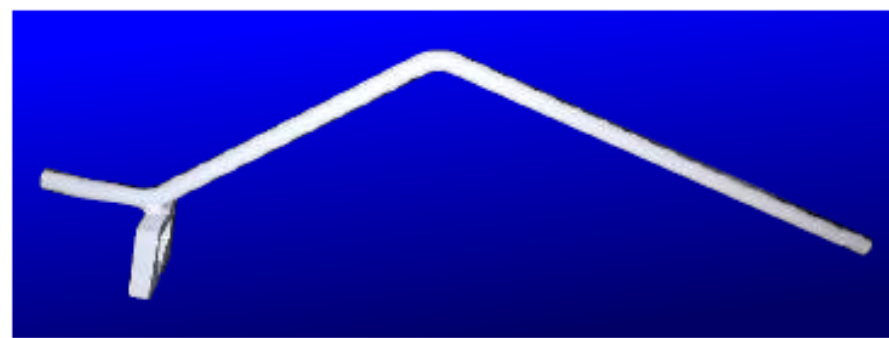


WOLFRAM
MINING SUPPLIES CC

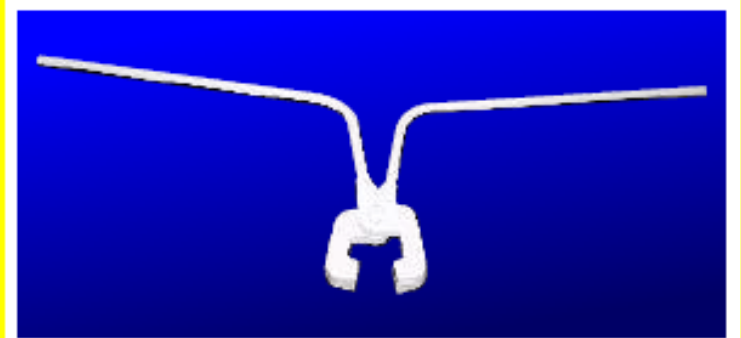
Equipment



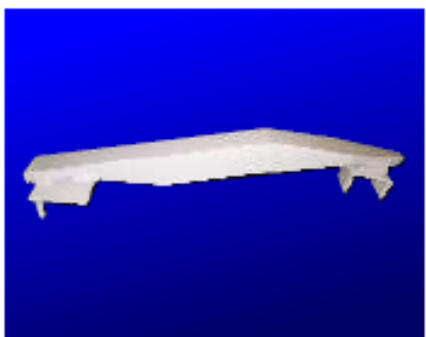
Pipe Lifter Tool
Stock Code:



Rail Lifting Tool
Stock Code:



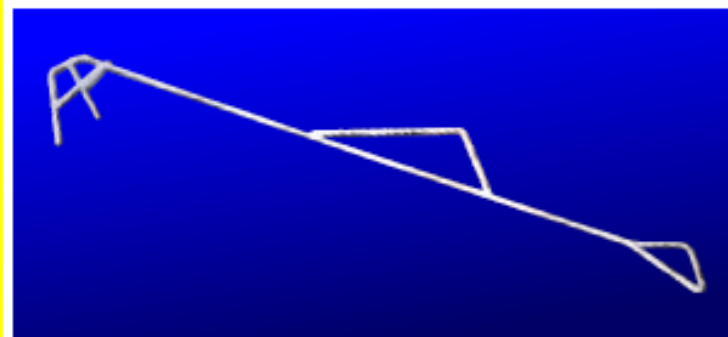
Railtong
Stock Code:



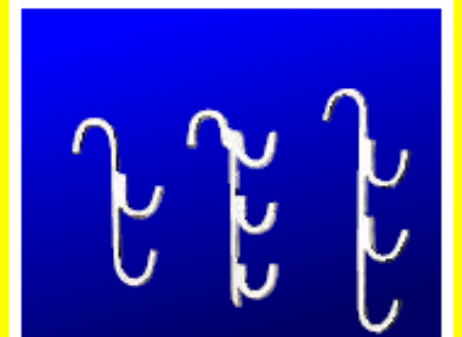
Rerailing Device
Stock Code:



Skilpad
Stock Code:



Tip Hook
Stock Code:



Pipe Hooks
Stock Code:

Products designed for
SAFETY & EFFICIENCY

CELL: +27 (0) 72 274 9050
TEL: +27 (0) 11 849 8103
EMAIL: sales@wolfram.co.za
www.wolfram.co.za

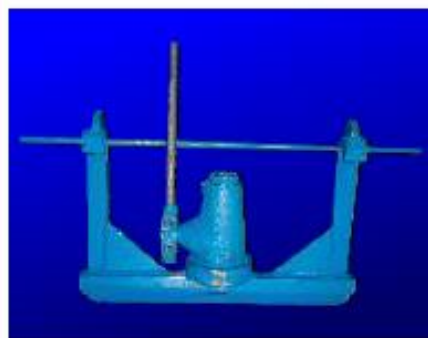


WOLFRAM
MINING SUPPLIES CC

Rail Equipment



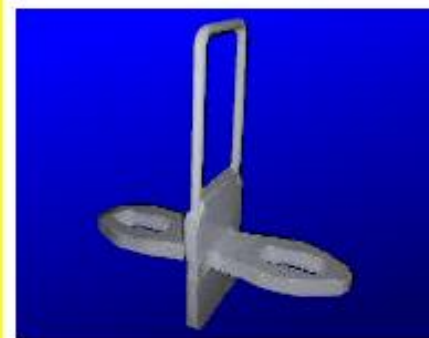
Hopper Coupling Pin
Stock Code:



Mechanical Rail Bender
Stock Code:



Hydraulic Rail Bender
Stock Code:



Griffen Link
Stock Code:



Harmony Hopper Coupler
470mm
Stock Code:



Harmony Hopper Coupling
New Design Wide 600mm
Stock Code:



Deton Rubber Coupler
Stock Code:



630mm Coupler Link With
Rubber Handle
Stock Code:

Products designed for
SAFETY & EFFICIENCY

CELL: +27 (0) 72 274 9050
TEL: +27 (0) 11 849 8103
EMAIL: sales@wolfram.co.za
www.wolfram.co.za



WOLFRAM
MINING SUPPLIES CC

Rail Equipment



Swivel Link
Stock Code:



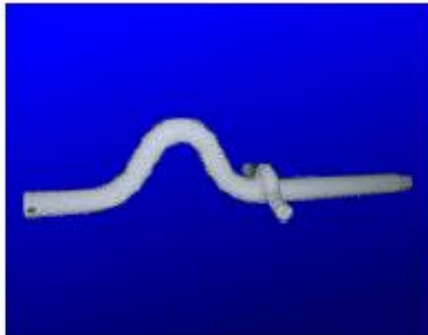
No 6 Automatic Coupler
Stock Code:



No 8 Automatic Coupler
Stock Code:



No 10 Automatic Coupler
Stock Code:



Goose Neck Hopper Pin
Stock Code:



T Handle
Stock Code:



Step Down Goose Neck
Stock Code:



Step Up Coupler
Stock Code:

Products designed for
SAFETY & EFFICIENCY

CELL: +27 (0) 72 274 9050
TEL: +27 (0) 11 849 8103
EMAIL: sales@wolfram.co.za
www.wolfram.co.za

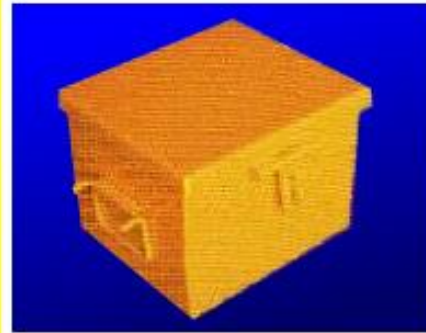


WOLFRAM
MINING SUPPLIES CC

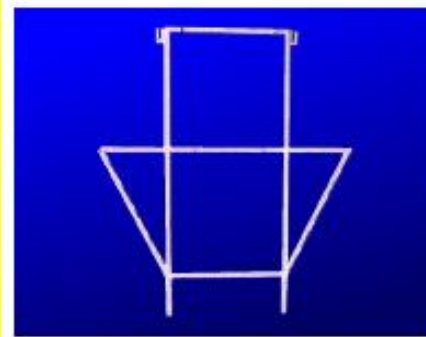
Explosive Boxes



Miners Toolbox
Stock Code:



Ticket Box
Stock Code:



Explosives Stand
Stock Code:



Anfax Drum
Stock Code:

Products designed for
SAFETY & EFFICIENCY

CELL: +27 (0) 72 274 9050
TEL: +27 (0) 11 849 8103
EMAIL: sales@wolfram.co.za

W
WOLFRAM
MINING SUPPLIES CC

www.wolfram.co.za

Explosive Boxes



**Standard Plastic Explosive
Box Dual Lock**
Stock Code:



**Standard Plastic Accessories
Box Autolock**
Stock Code:



**Standard Plastic Explosives
Box Manual Lock**
Stock Code:

EXPLOSIVES / SPRINGSTOWWE	
TYPE OF EXPLOSIVE	
RESPONSIBLE PERSON	
W/PLACE / CONTR.No.	
BOX No.	
QUANTITY	
DATE	

Explosive Sticker
Stock Code:

ACCESSORIES	
TYPE OF ACCESSORIES	
RESPONSIBLE PERSON	
W/PLACE / CONTR.No.	
BOX No.	
QUANTITY	
DATE	

Explosive Sticker
Stock Code:

EXPLOSIVES / SPRINGSTOWWE	
TYPE OF EXPLOSIVE	<input type="text"/>
NAME	<input type="text"/>
Cont. No.	<input type="text"/>
Box No.	<input type="text"/>
Kilograms	<input type="text"/>

Explosive Sticker
Stock Code:



Accessories Box
Stock Code:



Old Explosive Box
Stock Code:

Products designed for
SAFETY & EFFICIENCY

CELL: +27 (0) 72 274 9050
TEL: +27 (0) 11 849 8103
EMAIL: sales@wolfram.co.za

www.wolfram.co.za


WOLFRAM
 MINING SUPPLIES CC

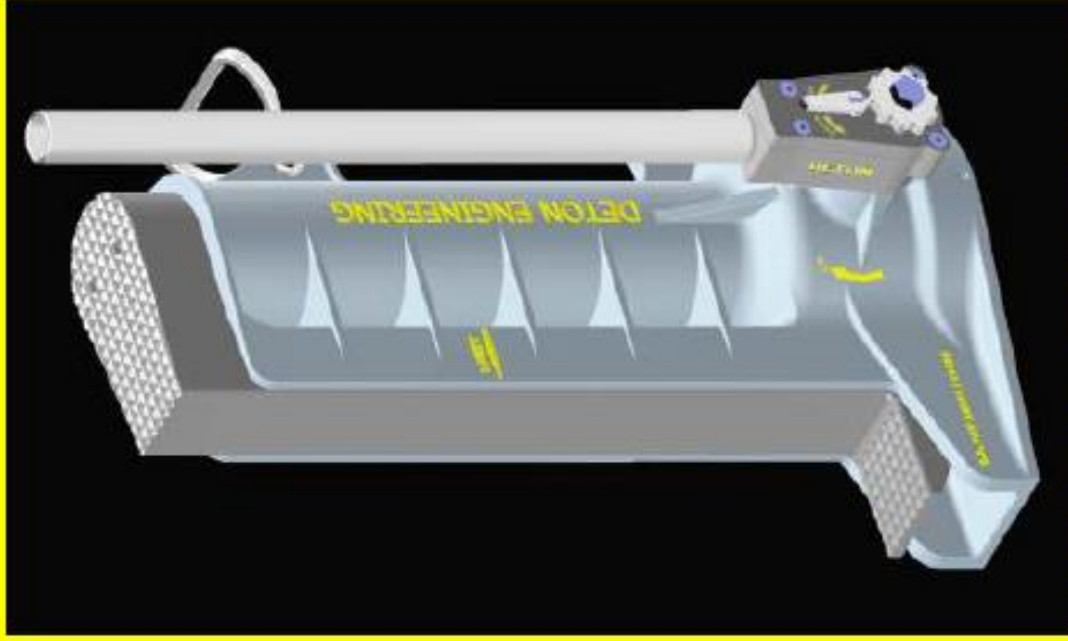
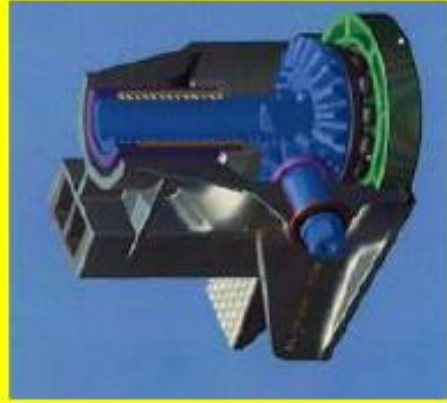
Innovative

safe reliable

Lifting solutions for above and below ground

Mines - Railroads - Farms - Military - Machine moving - Cable Laying - General Industry

STEPTON JACK



SAFEST - EASIEST - FASTEST MOST EFFICIENT WAY OF LIFTING

SAFETY:

Proof Load tested to 12.5 Tons
Rated Capacity (WLL) 10 Tons
Cannot slip under load
No levers or switches

ADVANTAGES:

Easily operated by one person, Lightweight - only 35.6kg
Very effective and fast. Mechanically operated.
No Brakes, No Hydraulic Seals, Cylinders or OIL.
Load can be lifted from either the Toe or the Head of the Jack.

COST EFFECTIVE:

Virtually no maintenance required
Minimal wearing parts
Extremely durable
Affordable

Model	Description	Toe Size mm	Stroke mm	Closed Height mm	Min Toe Height mm	Mass kg	Max. Safe Load (Ton)	Tested Load (Ton)
STJ10	10 Ton Stepton Jack	80x67	300	585	75	35.64	10	12.5

FIRST for Excellence
FIRST for Quality
First for Reliability



Hercules Jack



Products designed for
SAFETY & EFFICIENCY

